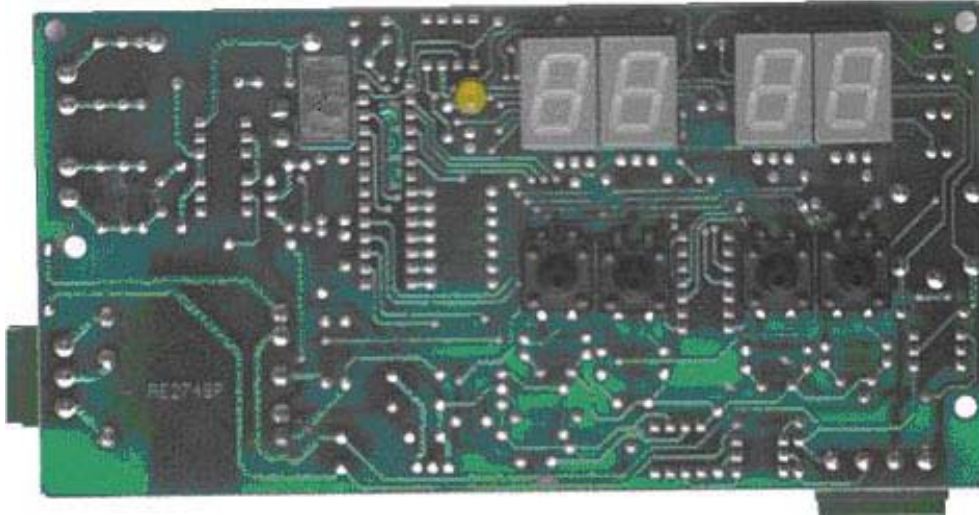


Spotpic

Full Digital control for spot welding machines



Spotpic is a low cost, full digital control for spot welding machines, the synchronization with the line and the thyristors burning is controlled by an 8 bit microprocessor in OTP technology.

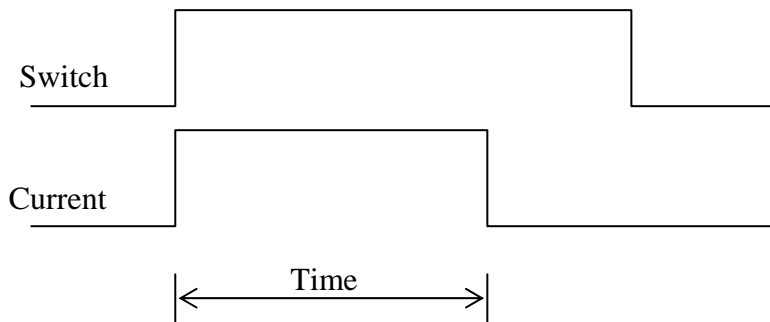
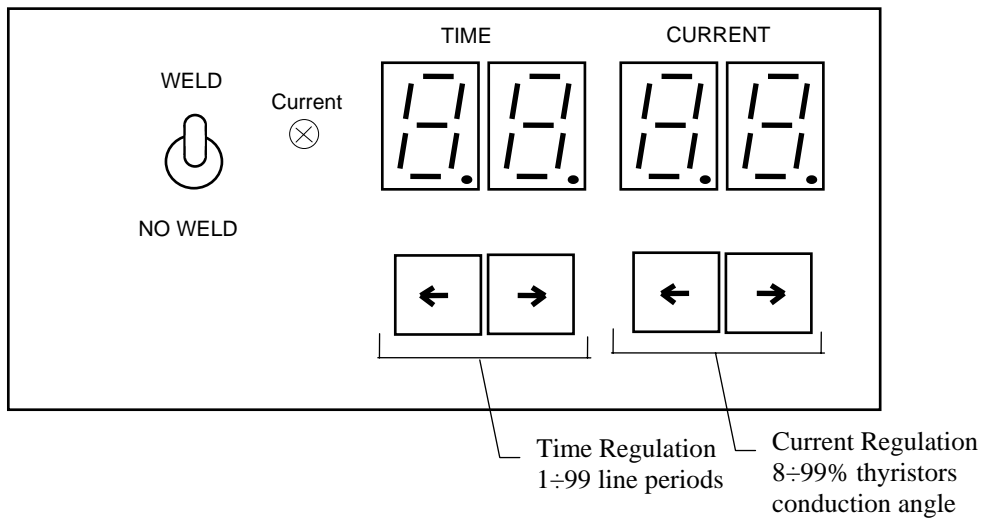
- *Synchronization with the supply line by means of microprocessor.*
- *Firing thyristor pulse from microprocessor.*
- *Regulation of weld time in line periods 1-99.*
- *Regulation of welding current 8-99%.*
- *The welding parameters are saved on E²PROM.*
- *Switch for weld - no weld selection*
- *There is a LED for display current erogation.*

The control is available in 5 different versions:

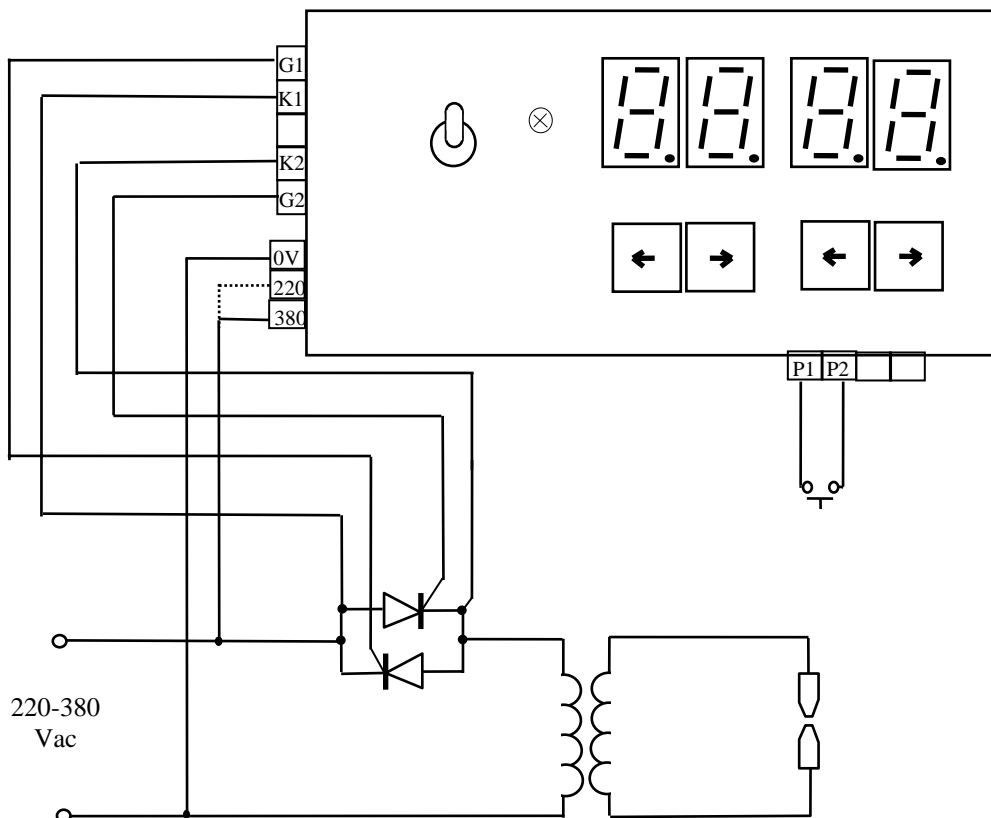
1. *Spotpic*
2. *Spotpic plus single cycle.*
3. *Spotpic plus recursive cycle.*
4. *Spotpic plus two cycles.*
5. *Spotpic plus cyclical cycles.*

SPOTPIC:

With only regulation of spot time and current.

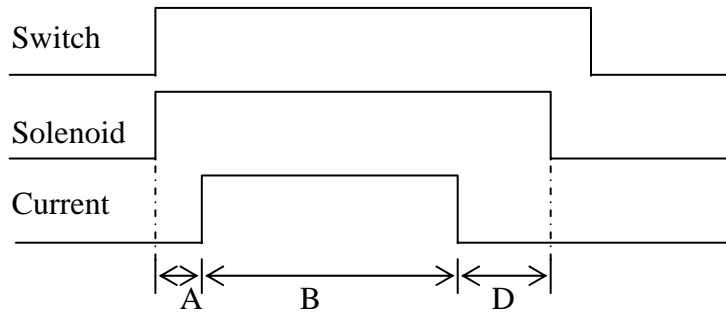
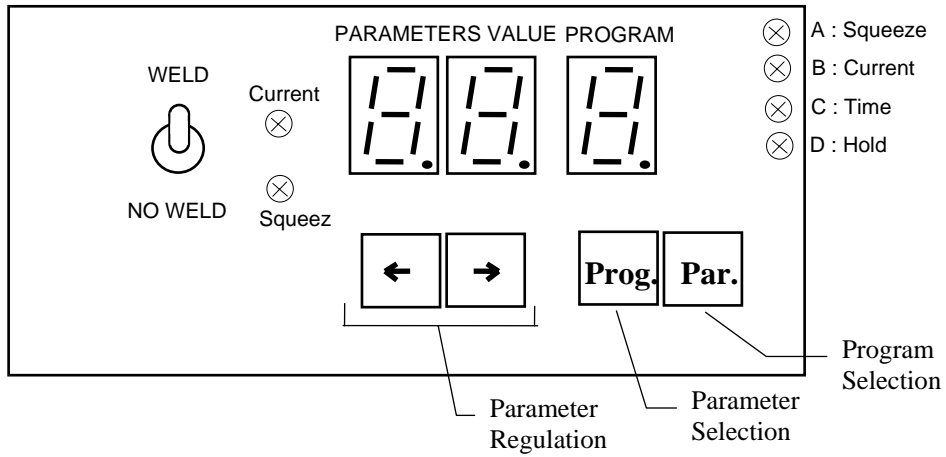


Connections diagram for spotpic:



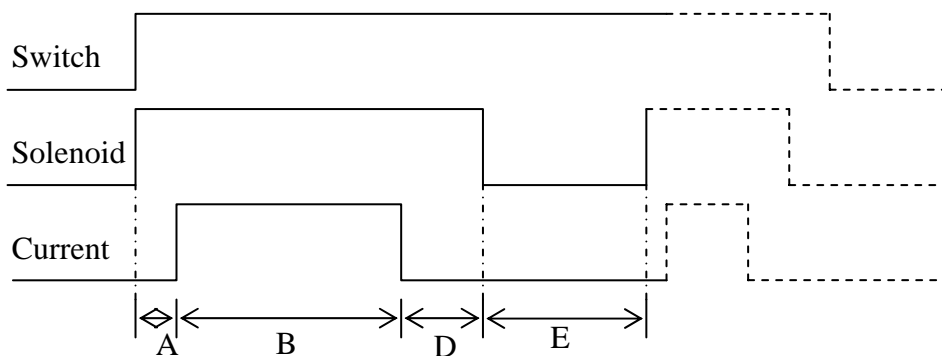
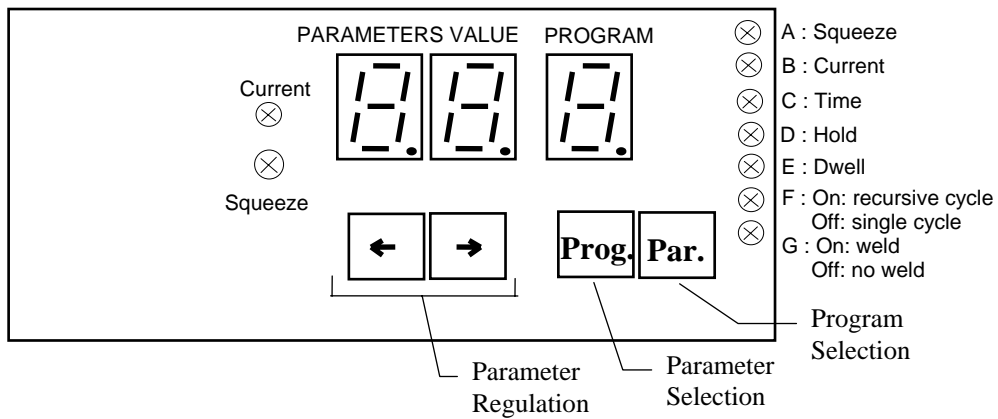
SPOTPIC PLUS single cycle:

Led A B C D display the step selected for adjustment of parameter.
Led current and squeeze display the status of the machine during welding cycle.



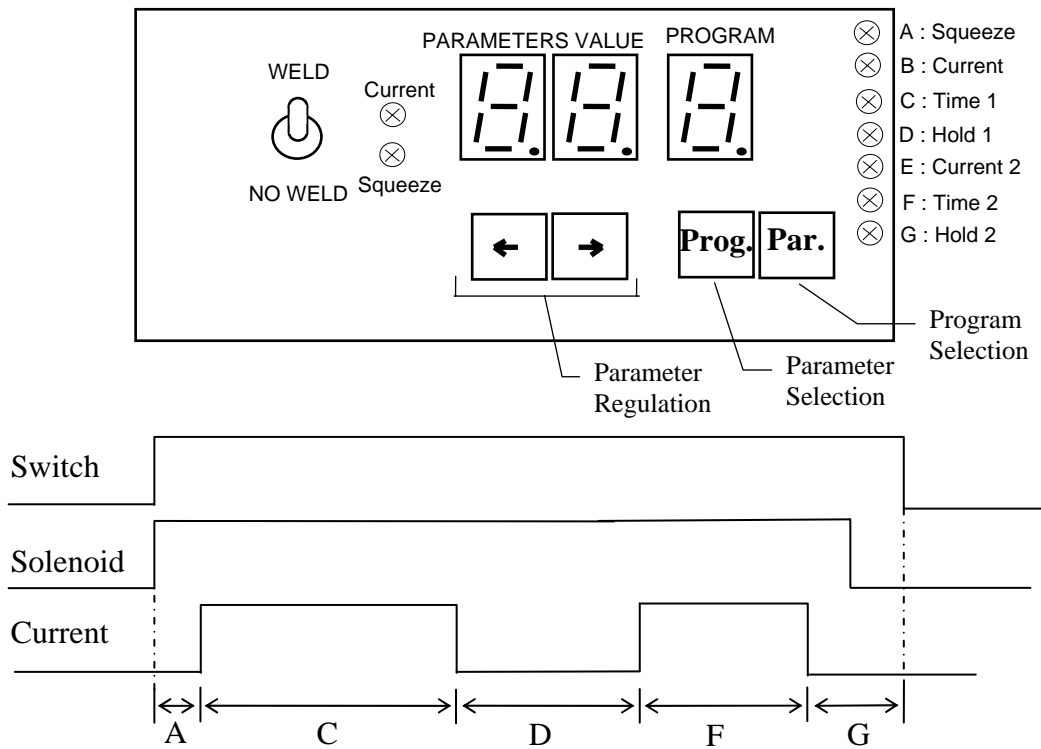
SPOTPIC PLUS recursive cycle:

Maintaining closed the command switch the welding cycle is continually repeated with a dwell between each cycle.



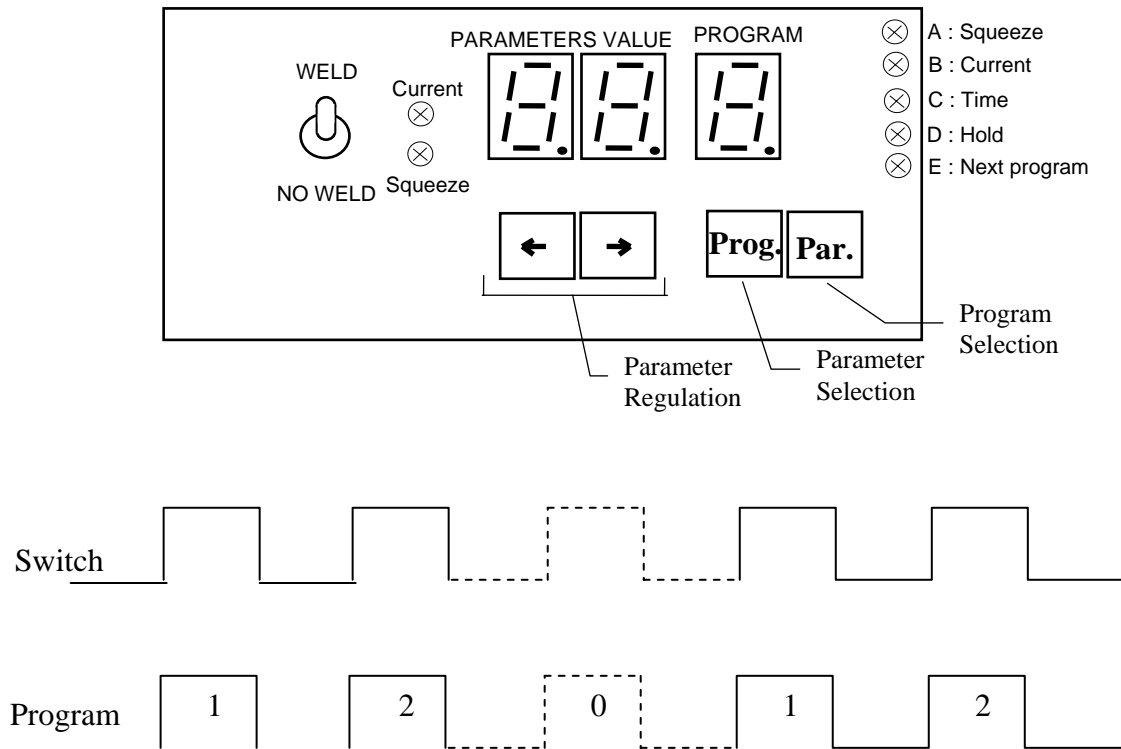
SPOTPIC PLUS two cycles:

Maintaining closed the command switch after first cycle the control execute a second cycle with different regulations (setted parameters).



SPOTPIC PLUS cyclical cycles:

At each new start, the control changes the program 0-1-2....



Connections diagram for spotpic plus all types:

