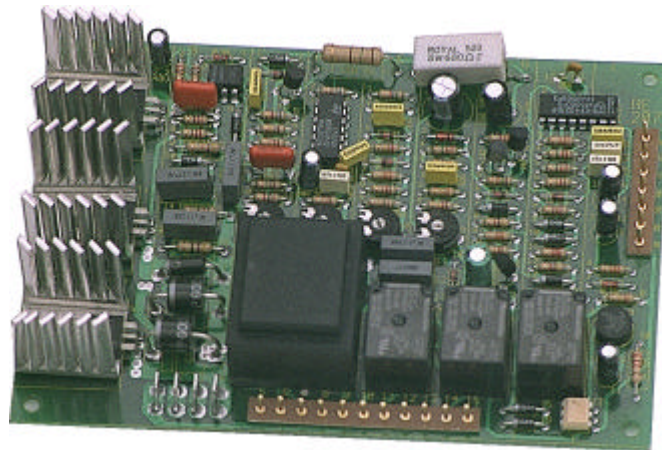


RE 207 ELECTRONICS CARD FOR SPEED REGULATION OF WIRE MOTOR FEEDER



Features :

- Single phase half controlled bridge, as AC/DC converter.
- Speed regulation through potentiometer or external reference 0 -10V Input impedance 20Kohm
- Speed feed-back through armature voltage or tacho dynamo
- Internal trimmers to calibrate : min speed , MAX speed , soft-start , burn-back.
- Dynamic braking of the motor through a mos fet
- Command of gas valve and power contactor through two high capacity relay.
- Single supply voltage between : 42 to 50V for a motor 42Vdc 180W
- Torch bottom operating in two time or four time command.
- Torch bottom insulated from electronics circuitary throught a transformer.
- Spot timer through a separately PCB (RE173) connect with RE207.
- Enabling with timer potentiometer rotation.
- Time settable between 0.3 to 5 sec.

