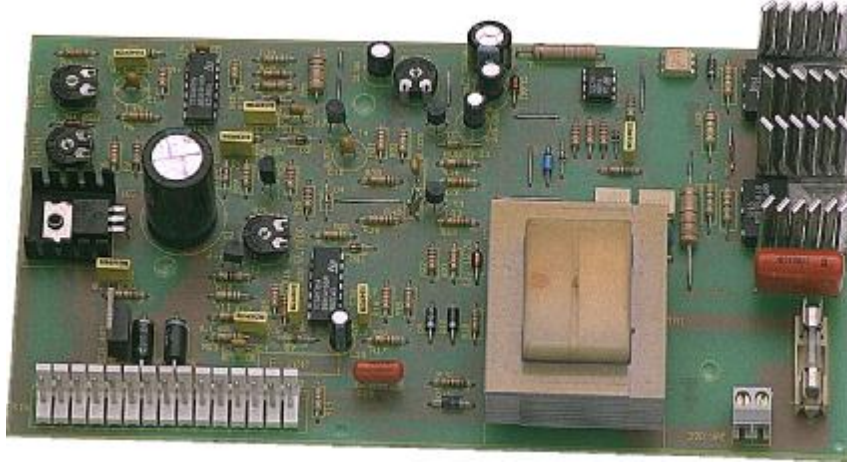


E 200RE

**E200RE IS AN ELECTRONIC CARD INTENDED TO THE CONTROL OF
MEDIUM
POWER SINGLE PHASE , MIG WELDING MACHINE.**



FEATURES:

- Speed regulation in switching mode (20 Khz) for a 24V 60W motor.
- Dc motor supply, is taking by welding voltage, so that no auxiliary transformer is required.
- Synchronous static switch incorporate, for directly switching of the primary of the main transformer (220-380Vac 25A), in this way are eliminated the current peak at turn-on of welding transformer.
- 24Vac or 220Vac gas valve may be used.

Spot timer:

- Enabling with timer potentiometer rotation.
- Time settable between 0.3 to 5 sec.

